

CONSERVATION OF STONEMWORK & SCULPTURE

SUE KELLAND, BA, ACR, Accredited conservator

LAWRENCE KELLAND, CSCS Heritage Skills Gold

Rose Cottage, Sharpham, near Walton, Street, Somerset BA16 9SF 01458 446381

info@kellandconservation.co.uk

www.kellandconservation.co.uk

EASTCOMBE, GLOUCESTERSHIRE : WAR MEMORIAL

REPORT ON CONSERVATION WORK CARRIED OUT

May 2018



1. DESCRIPTION

1.1 The memorial is of Cotswold limestone in an unusual design. There are three circular steps, on which stands a triangular inscription stone, carved with a dedication and a winged crown on the front (south side) and with names on the other two sides. Above the inscription is a circular sill, on which stands a triangular obelisk. Names and a dedication from the 1939-45 war

Cleaning revealed traces of black paint in some letters.

1.2 **Fixings** : no fixings are visible, and there may be none

Jointing material : fine, probably cement-based

1.3 **Number of main elements** : 6

2. CONDITION ASSESSMENT

2.1 The memorial was largely in good condition, the stonework stable and the pointing intact.

2.2 There was a band of decay which follows a fault line sloping across the front face and continuing around the other two sides, although, as these are sheltered, the damage was less severe. It had caused the loss of parts of the lettering on all sides. There was a further minor area of damage towards the base of the front section). These areas had been patched with a hard grey Portland cement mortar which was now failing and pulling away. The carving of a crown has also suffered some damage to the spheres and leaves.

2.3 All the lettering is eroding, particularly on the front.

2.4 The rest of the surface is in good condition, but was heavily stained with lichen and algae which is increased by the proximity of the yew branches behind.

3. CONSERVATION TREATMENT

3.1 **Cleaning** Cleaning was achieved using water in handsprays and gentle brushing to remove algal growth, lichen and surface dirt. Traces of black paint were found in some letters.

3.2 Repairs and repointing were carried out with a hydraulic lime (NHL3.5) and sand mortar at 1 : 2.5 and coloured to match the stone.

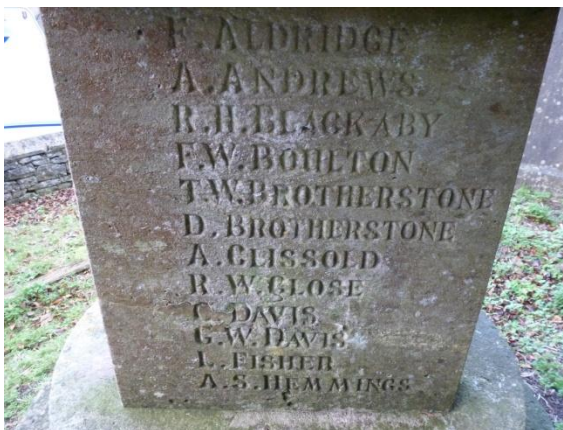
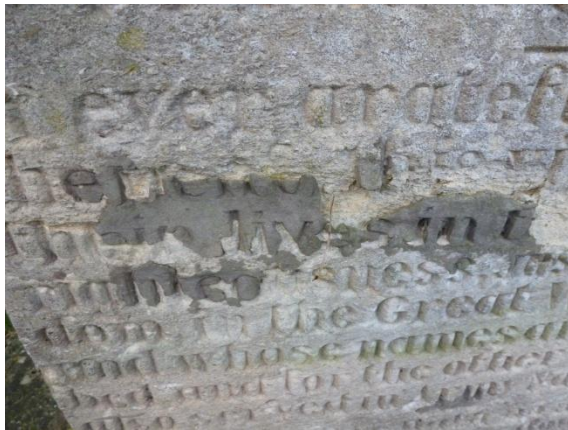
3.3 The lettering on the cement repairs was traced for copying and then the cement was removed. The damaged areas were then repaired as above and the missing lettering cut into the mortar. The word 'cause' is clearly incorrect, as it does not fill the available space, and it should probably read 'service', but we could only reproduce what was already there. (see photos)

3.4 Lettering was then repainted, firstly with 'Keim' mineral paint, then with an oil-based gloss paint, retrieving eroded letters.

BEFORE CLEANING AND REPAIR



DAMAGE ON FRONT AND SIDES



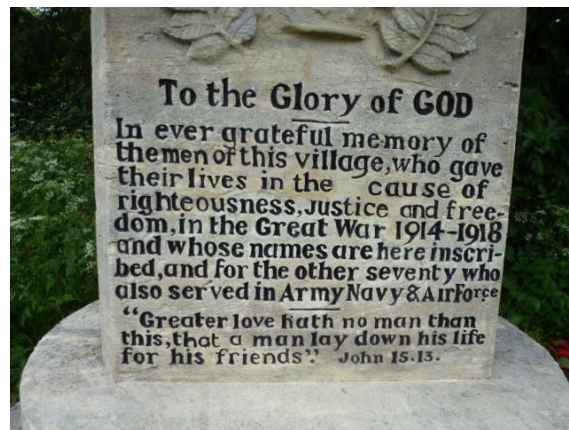
LOWER LETTRING



DURING CLEANING



COMPLETED LETTRING



G. HEMMINGS
A. D. HOOK
F. W. KING
W. T. PEGLER
W. M. SKERTON
F. G. SKERTON
W. G. WILLIAMS
W. WINSTONE
T. W. YOUNG
R. WORKMAN

To the Glory of GOD
In ever grateful memory of
the men of this village, who gave
their lives in the cause of
righteousness, justice and free-
dom, in the Great War 1914-1918
and whose names are here inscri-
bed, and for the other seventy who
also served in Army Navy & Air Force
"Greater love hath no man than
this, that a man lay down his life
for his friends." John 15:13.

ful memory of
village, who gave
the cause of
s, justice and free
eat War 1914-1918
mes are here inscri
e other

F. ALDRIDGE
A. ANDREWS
R. H. BLACKABY
F. W. BOULTON
T. W. BROTHERSTONE
D. BROTHERSTONE
A. CLISSOLD
R. W. CLOSE
C. DAVIS
G. W. DAVIS
L. FISHER
A. S. HEMMINGS

G. HEMMINGS
A. D. HOOK
F. W. KING
W. T. PEGLER
W. M. SKERTON
F. G. SKERTON
W. G. WILLAVISE
W. WINSTONE
T. W. YOUNG
R. WORKMAN



